

# Functional test cases - Correction



Version 1.2

# Table of contents

<b>1.</b>	<b>Introduction.....</b>	<b>2</b>
1.1	Preconditions.....	3
1.2	Process flow.....	3
<b>2.</b>	<b>Test scenarios.....</b>	<b>4</b>
2.1	Detailed test scenarios .....	5
2.1.1	Test 1 - Send correction request which is rejected.....	5
2.1.2	Test 2 - Send correction request which is accepted .....	5

# Introduction

1

The purpose of this test is that the Economic Operator (EO) can make changes on an already existing declaration before the goods have been presented. This is called a correction. A correction is sent by the EO to Toldsystemet. A declarant or representative can be allowed to make changes on a declaration where the goods are not yet presented. Further, corrections cannot be allowed if:

- The Customs authority has notified the declarant that they intend to investigate the goods.

## 1.1 Preconditions

To be able to execute the functional test cases for correction, the EO must have established a connection to Toldsystemet, see also the Connectivity Guide. Second, the submitter must be able to submit a pre-logged declaration followed by a correction. This must be done using the following services:

- DMS.Import.Declaration.Submit
- DMS.Import.Declaration.Amend

To endpoint:

<https://secureftpgatewaytest.skat.dk:6384/exchange/CVR <CVR> UID <UID>>

## 1.2 Process flow

The process flow for a correction request of an already existing declaration can be seen in Figure 1 below.

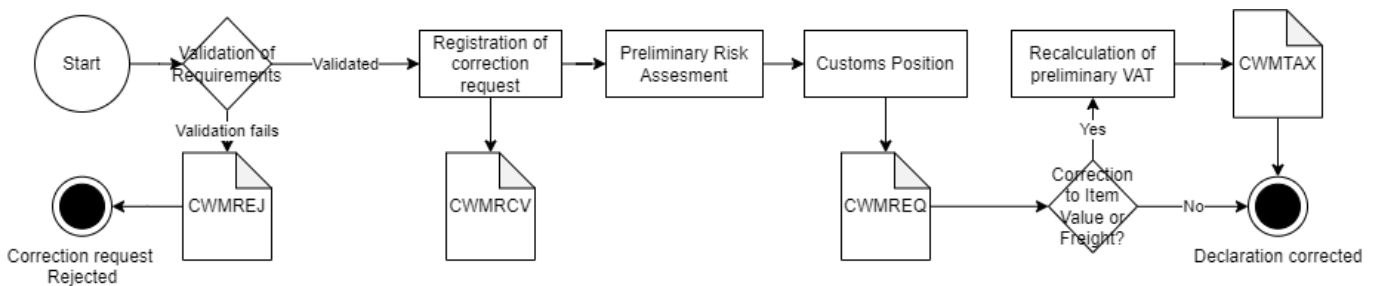


Figure 1 – Correction flow

# Test scenarios

2

To complete the functional onboarding phase two, the EO must deliver confirmation of passed test-cases for each test scenario:

Test no	Test Scenario	Passed
1	Send correction request which is rejected.	<input type="checkbox"/>
2	Send correction request which is accepted.	<input type="checkbox"/>

## 2.1 Detailed test scenarios

The following sections will describe the aim of the specific test scenarios and it will provide the desired results of the test. It should be noted that there can be changes in the notifications provided by Toldsystemet, because the solution is still in development. If at a later point more notifications will be added the EO will be informed about this.

### 2.1.1 Test 1 - Send correction request which is rejected

The aim of Test 1 is to test if the EO can obtain notification that the correction request has been rejected.

**Passed when a CWMREJ notification has been received after the correction request.**

**Test steps:**

- Submit initial H7 declaration – you can use the provided IMD.xml (remember to fill in LRN)
- Test for wrong content by sending a correction request with changes in data element which are invalid:

```
<ns3:Consignor>  
...  
  <ns3:CountryCode>DS</ns3:CountryCode>  
...  
</ns3:Consignor
```

- Fill in the content error in a correction XML – you can use the provided Corr\_test1.xml, fill the XML with LRN and assigned MRN and submit the XML.
- Pull notification to see that correction request has been rejected – indicated by the **CWMREJ** notification.

### 2.1.2 Test 2 - Send correction request which is accepted

The aim of Test 2 is to test if the EO can obtain notification that the correction request has been accepted, including the following notifications.

**Passed when the CWMRCV and CWMREQ (and CWMTAX if there are changes in VAT) notifications has been received after the correction request.**

**Test steps:**

- Submit initial H7 declaration – you can use the provided IMD.xml (remember to fill in LRN)
- Send in a correction request with changes in data element where it is allowed:

```
<ns3:Consignor>  
  <ns3:Name>Texporter Name</ns3:Name>  
  ...  
</ns3:Consignor>
```

- Fill in the change in a correction XML – you can use the provided Corr\_test2.xml, fill the XML with LRN and assigned MRN and submit the XML.
- Pull notification to see notification of granted correction request – **indicated by receiving the CWMRCV, (CWMTAX (if there are changes in VAT)) and CWMREQ notifications.**

